

**Specification**

Electrical rating	1~100mA/5~12VDC, 40T85
Electrical Life	300,000 cycles
Mechanical Life	500,000 cycles
Contact Resistance:	500mΩ Max. (initial)
Operating Force:	100 ±50gf
Insulation Resistance	100 MΩ Min.
Dielectric Strength	500VAC for 60 ± 5 sec.
Housing	UL94 V-0



**IP Protection**

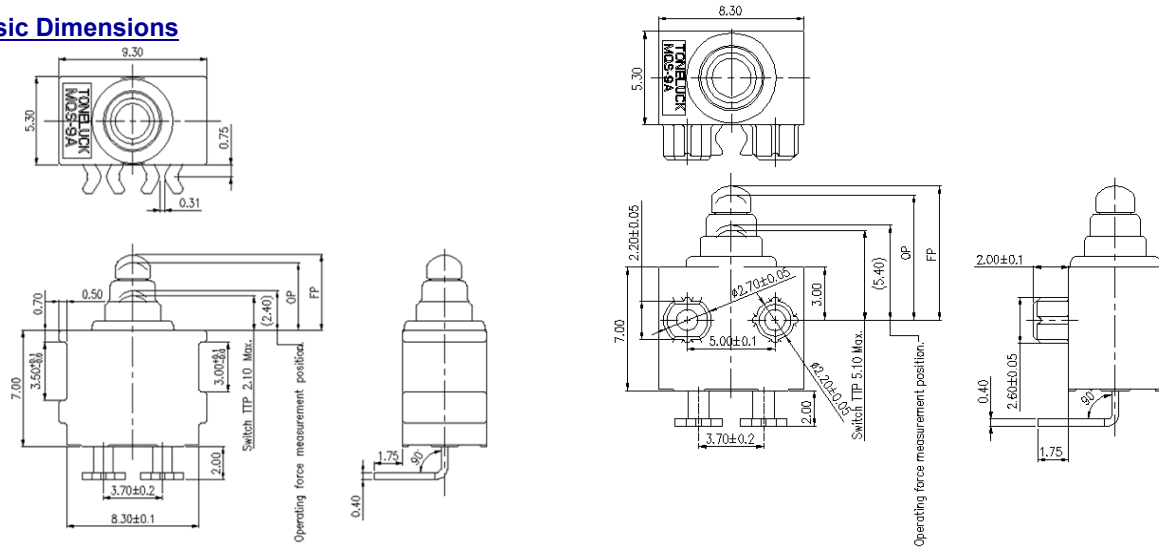
Series	Actuation Side	Terminal Side	OF	OP
MQS-9A	IP 67	IP00	50 - 150 gf	4.1±0.2mm

**Ordering Instruction**

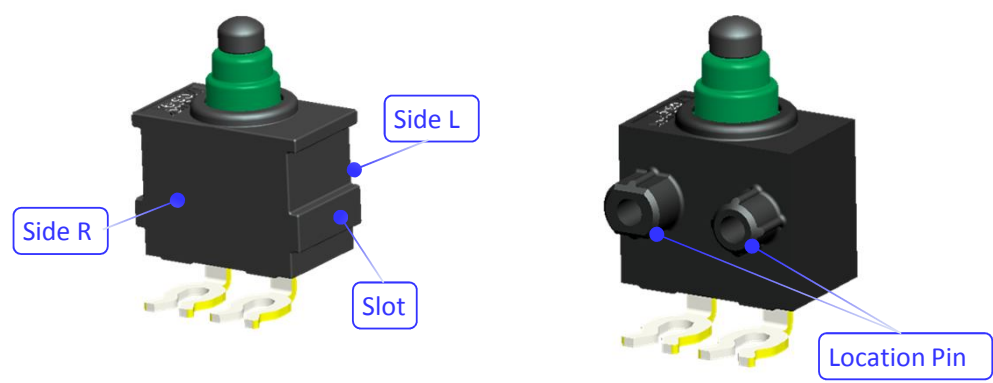
MQS-9A	1	N	A	-	01
--------	---	---	---	---	----

Series	MQS-9A
Electrical rating	1=1~100mA/5~12VDC, SPST NO 2=1~100mA/5~12VDC, SPST NC
Location Pin	A = Side L, 0.7mm B = Side R, 0.7mm C = Both Sides, 0.7mm D = Side L, 2.0mm E = Side R, 2.0mm(NO) F = Side R, 2.0mm(NC) G = No Location Pin N = Slot H = Laser welding Side R, 2.0mm(NO) J = Laser welding Side R, 2.0mm(NC)
Terminal Type	A=Angled PCB pins, side L B=Angled PCB pins, side R C=Straight PCB pins D=Solder terminal E=Interlock terminal, side L F= Interlock terminal, side R =Laser welding
Version	Standard Version: 01 A2:IP68 at the terminal side Custom-made:02,03,04, etc.

**Basic Dimensions**

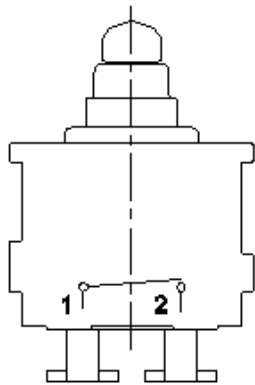


**Common Characteristics**

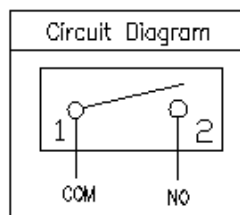


**Circuit**

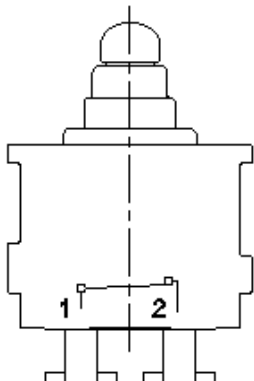
MQS-9A1XX-XX



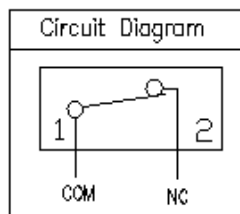
Normal Open



MQS-9A2XX-XX

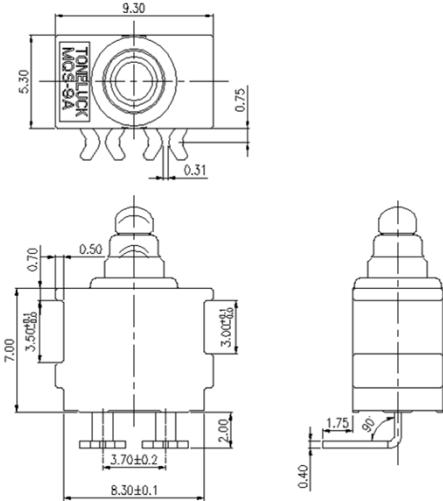


Normal Close

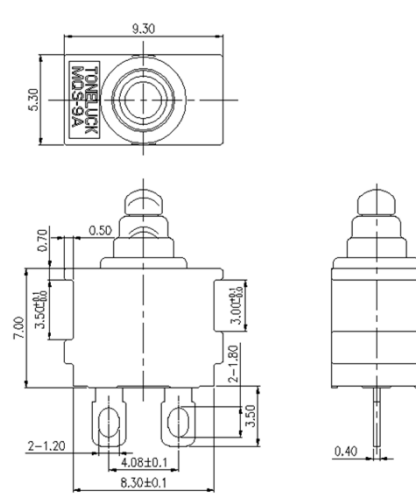


**Outline**

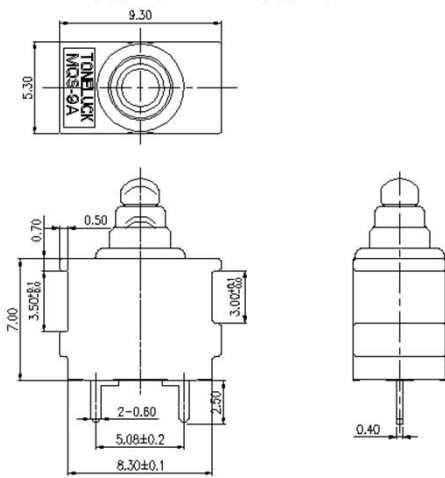
Location Pin(Type N)、Terminal(TypeF)



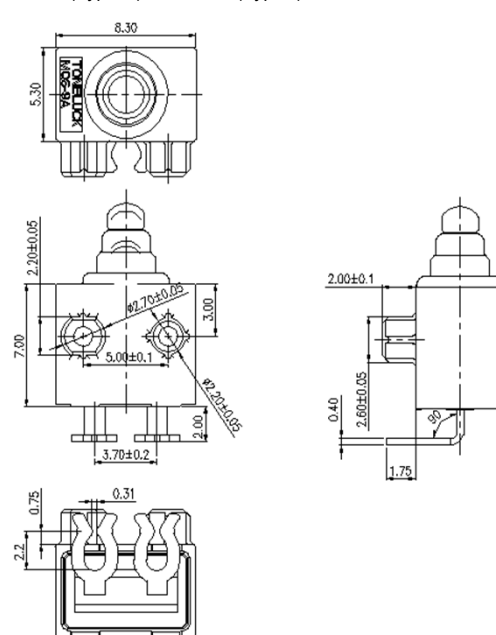
Location Pin(Type N)、Terminal(TypeD)



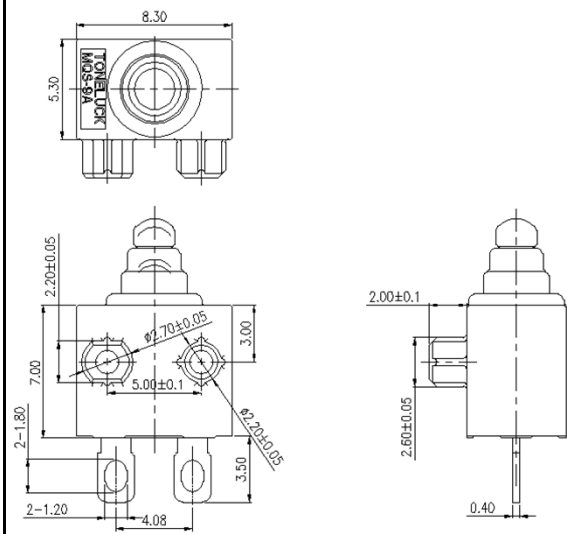
Location Pin(Type N)、Terminal(TypeC)



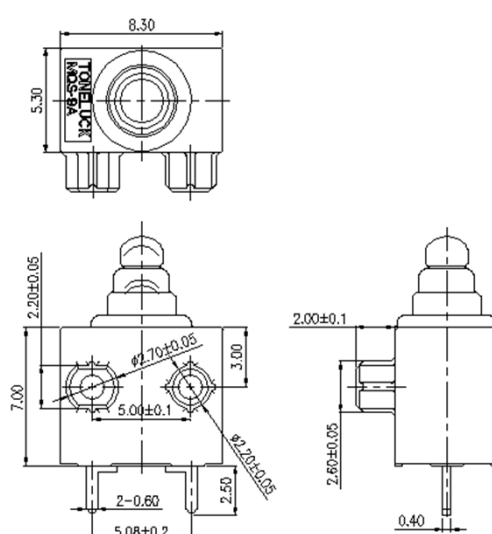
Location Pin(Type E)、Terminal(TypeF)



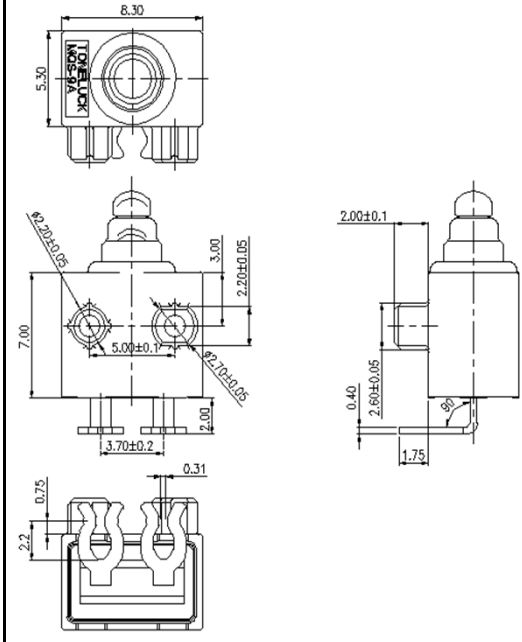
Location Pin(Type E)、Terminal(TypeD)



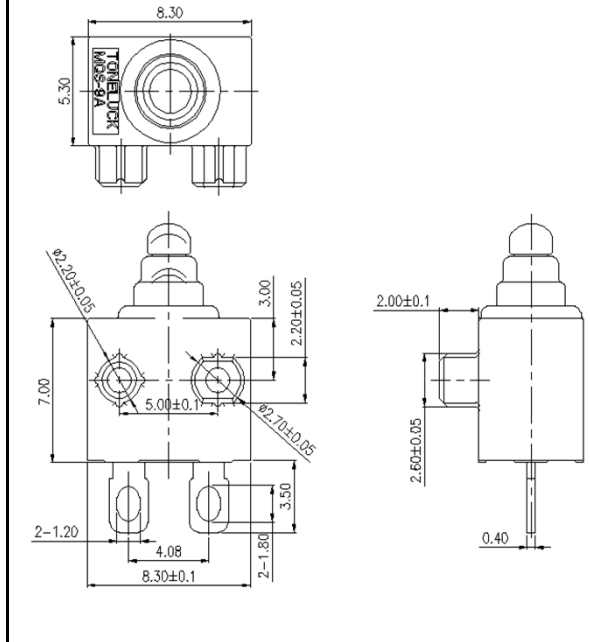
Location Pin(Type E)、Terminal(TypeC)



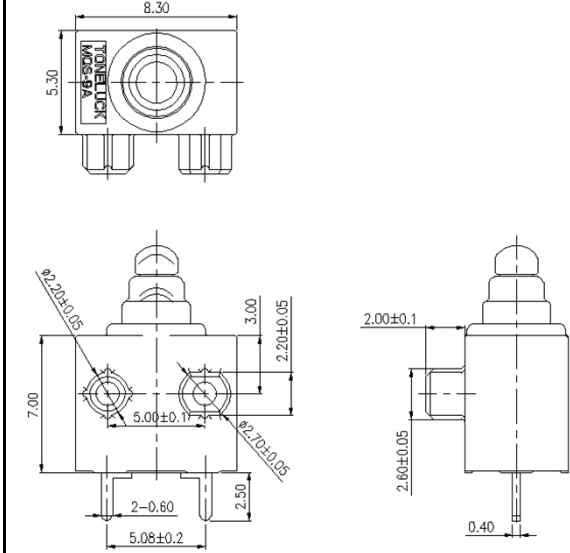
Location Pin(Type F)、Terminal(TypeF)



Location Pin(Type F)、Terminal(TypeD)

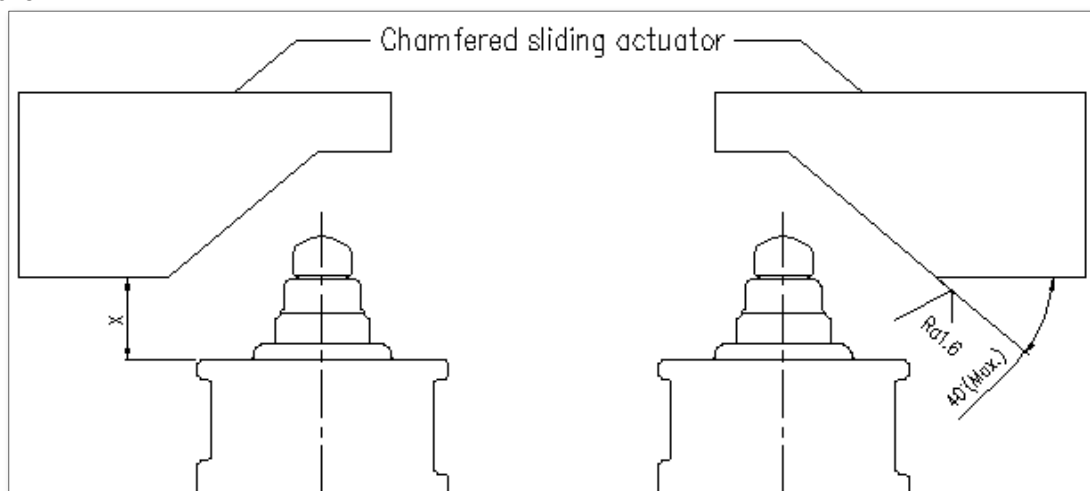


Location Pin(Type F)、Terminal(TypeC)



**Actuation Angle**

Besides actuating the micro-switch vertically, the switch could be operated by cam-shaped or chamfered sliding actuators with an approximate value of Max. 40°. Please refer to the technical specification for the specified conditions.



The approximate value of 40° was tested under the following conditions:

- Chamfered sliding material : POM.
- Polished chamfered sliding surface, greased with lubricant oil .
- Operation frequency :30 cycles per minute.
- Operating travel until permissible end position measure "X"(see switch drawing).