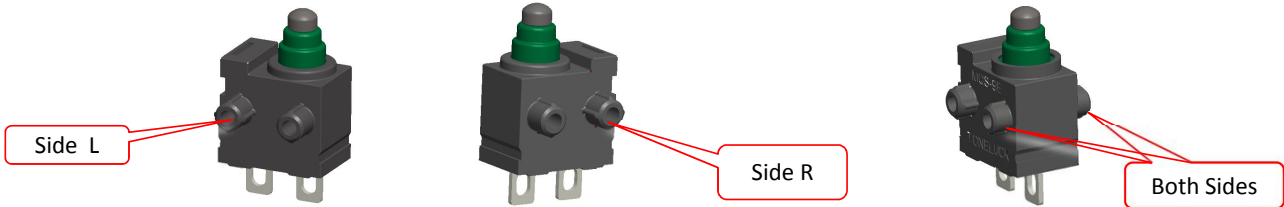


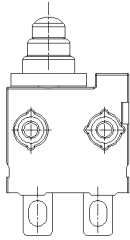


**Common Characteristics**

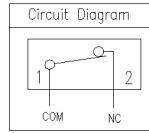
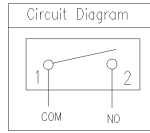


**Circuit**

MQS-9BXXXX-XX

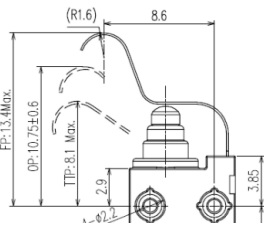


COM NC/NO

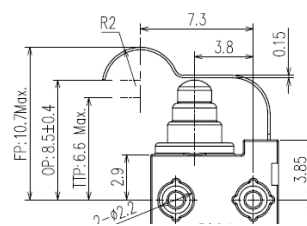


**Lever type**

Type 01: 1# Lever

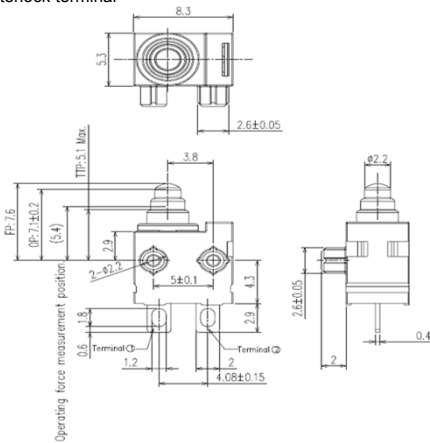


Type 02: 2# Lever

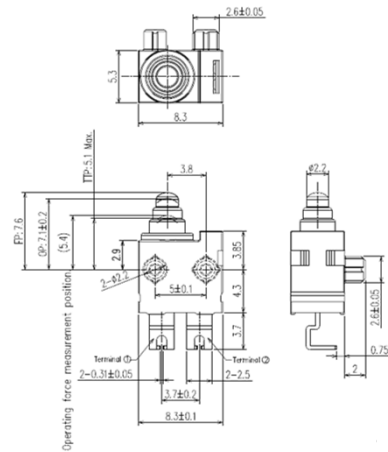


**Terminal type**

Type D: Interlock terminal

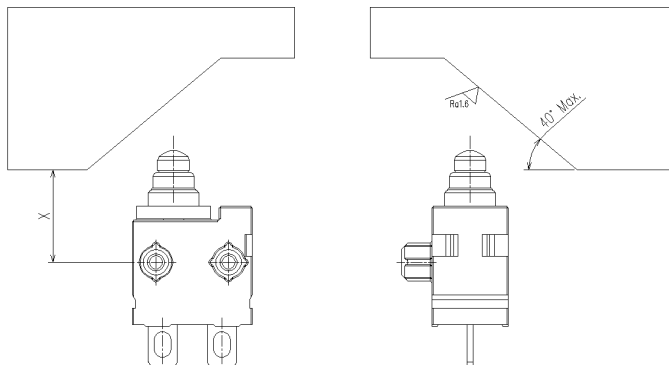


Type R: Interlock terminal



**Actuation Angle**

Besides actuating the micro-switch vertically, the switch could be operated by cam-shaped or chamfered sliding actuators with an approximate value of max. 40°. Please refer to the technical specification for the specified conditions.



The approximate value of 40° was tested under the following conditions:

- Chamfered sliding material:POM.
- Polished chamfered sliding surface,greased with lubricant oil.
- Operation frequency :30 cycles per minute.
- Operating travel until permissible end position measure "X"(see switch drawing).